

MASTER PLAN FUTURE IMPROVEMENT

- ① POTENTIAL BUILDING ADDITION
- ② ENLARGED STORMWATER FACILITY
- ③ RELOCATED STORMWATER FACILITY
- ④ RELOCATED MEMORIAL GARDEN
- ⑤ RELOCATED BICYCLE PARKING
- ⑥ IMPROVED SECURITY FENCING
- ⑦ INCREASED SOLAR PANEL CAPACITY

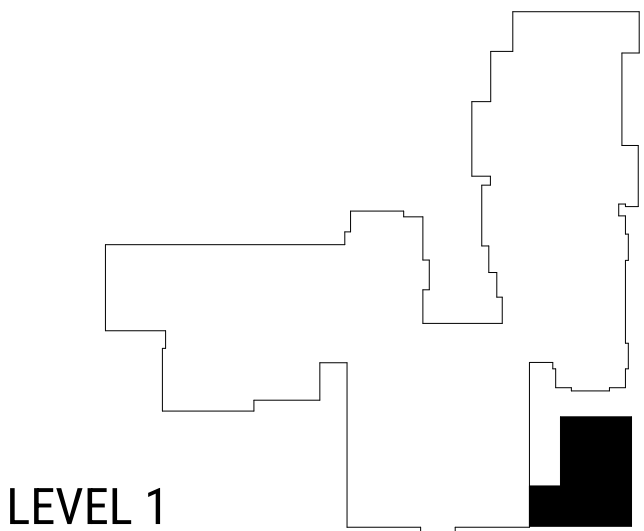
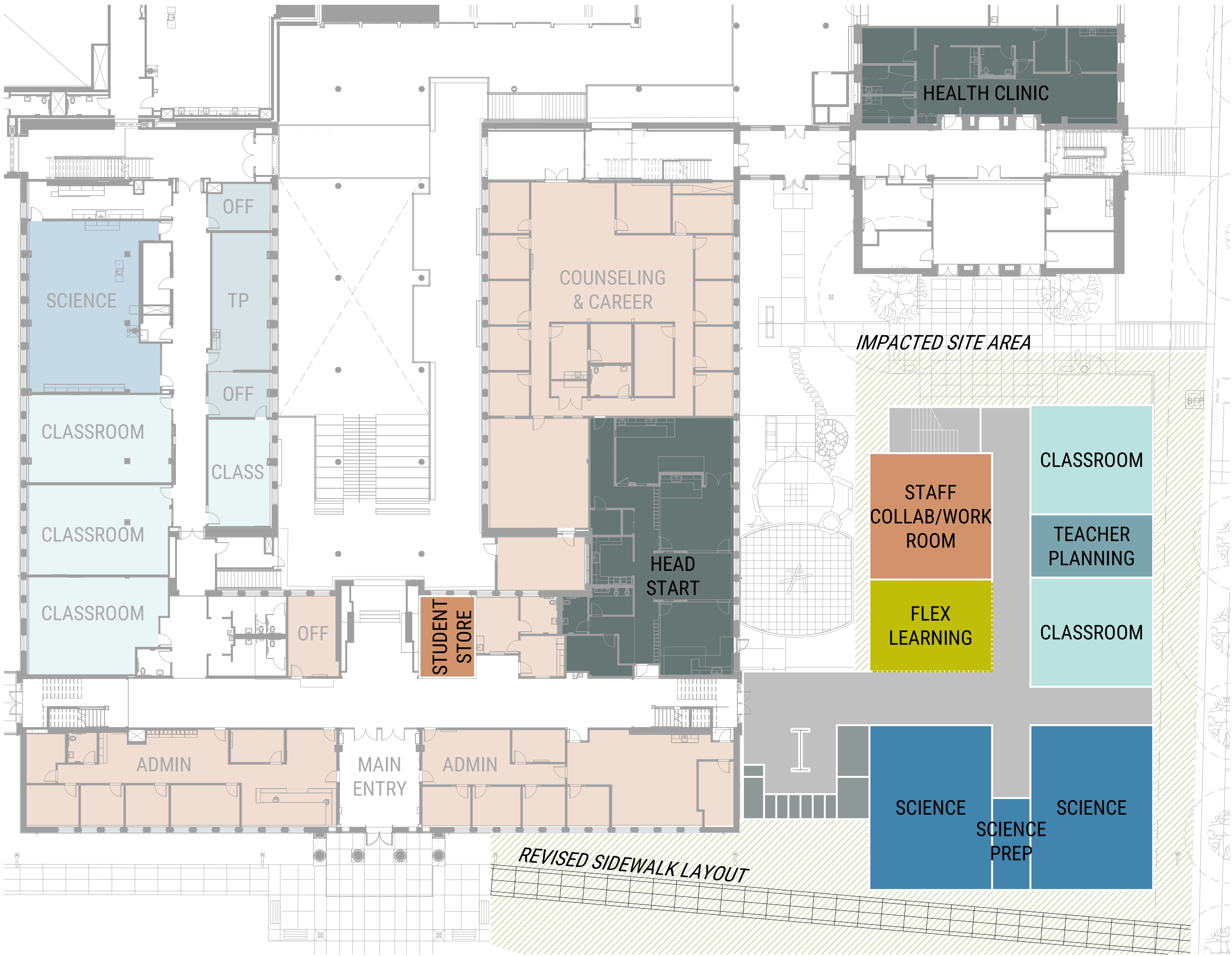
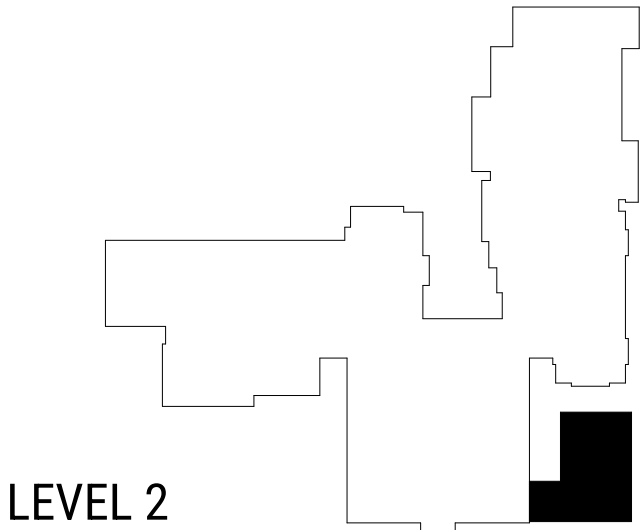
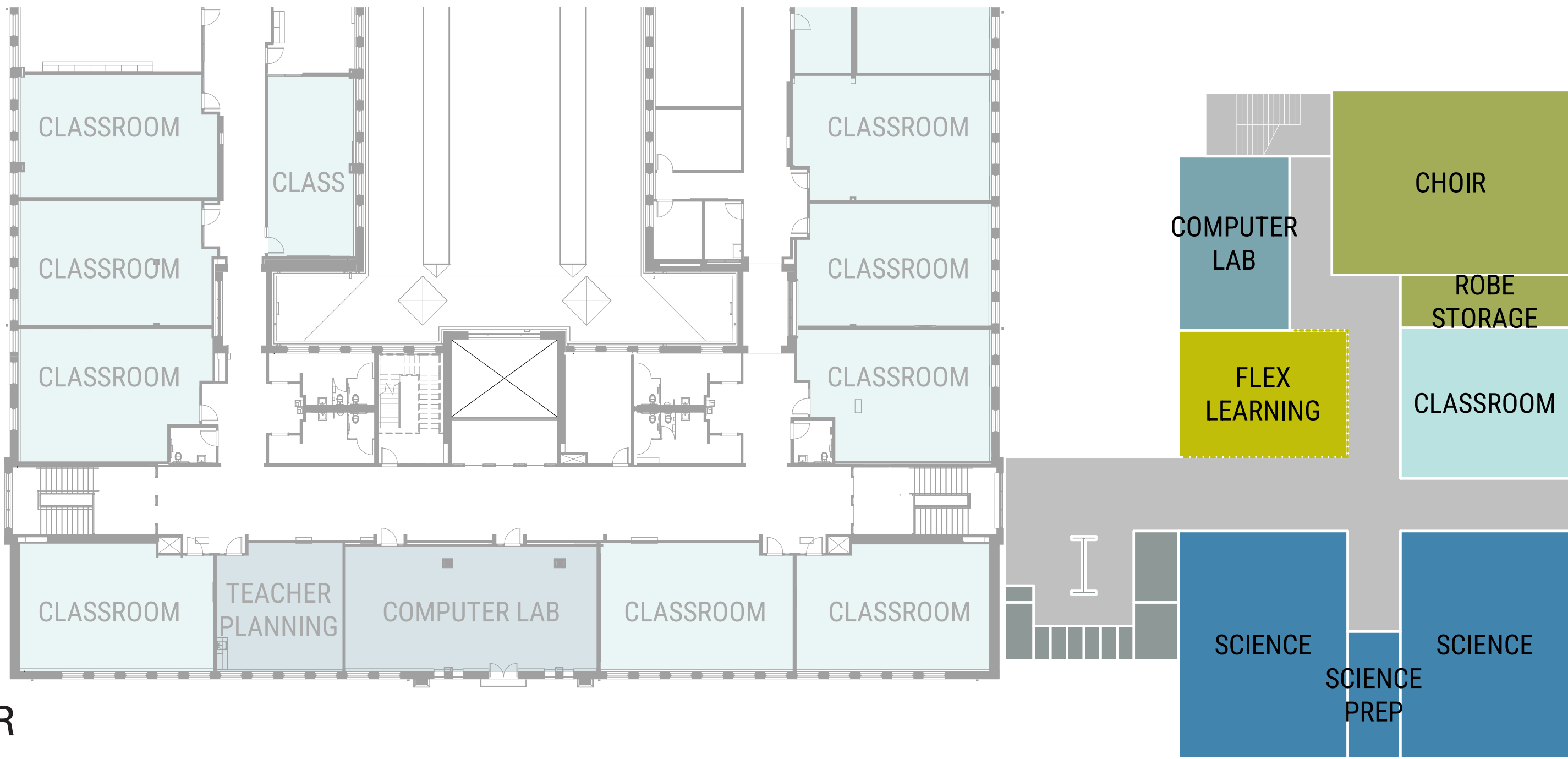
ADDITIONAL FUTURE IMPROVEMENTS  
(SEPARATE SCOPE)

- Ⓐ GRANDSTAND & CONCESSION BUILDING REPLACEMENT
- Ⓑ FIELD LIGHTING REPLACEMENT
- Ⓒ BLEACHER REPLACEMENT
- Ⓓ FIELD TURF REPLACEMENT



OPTION 1 - SINGLE ADDITION / EXISTING WRAP-AROUND SERVICES REMAIN

SECOND FLOOR

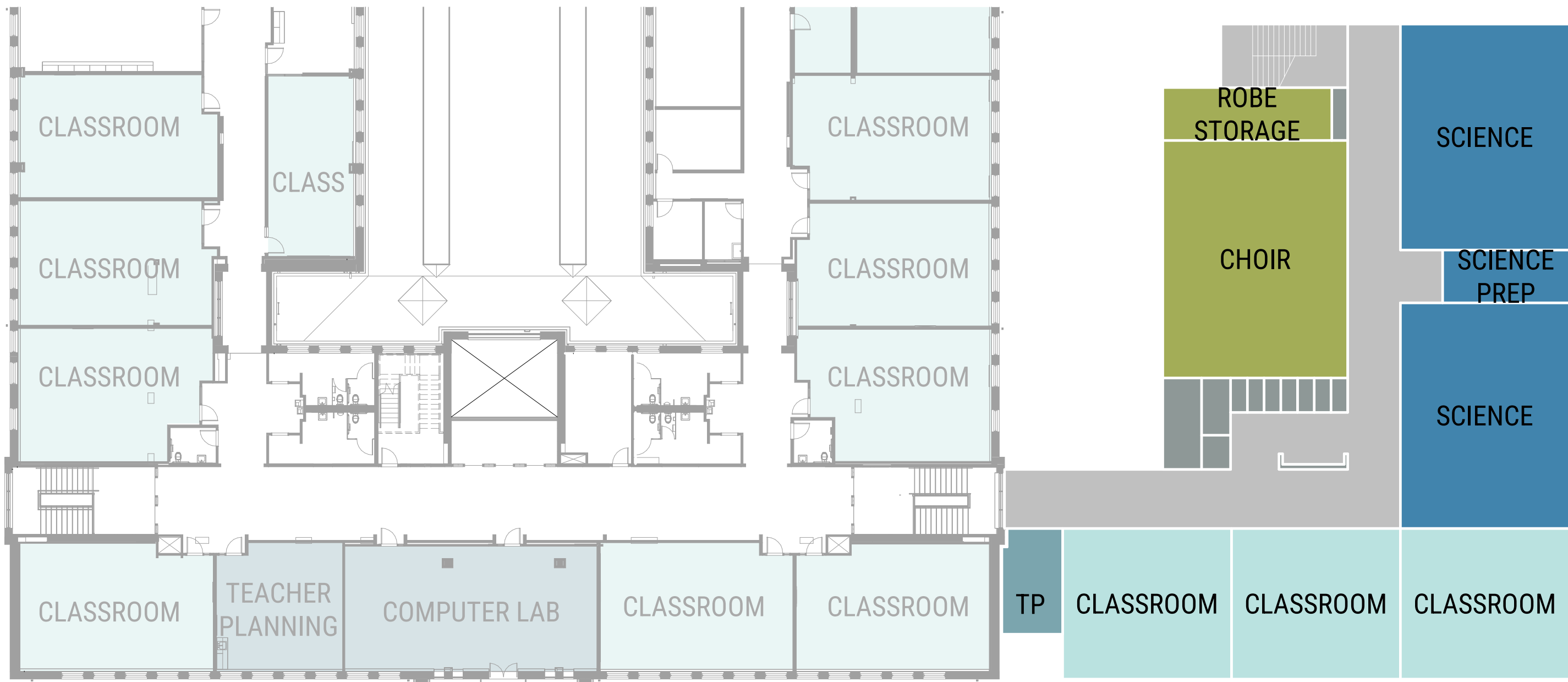


FIRST FLOOR

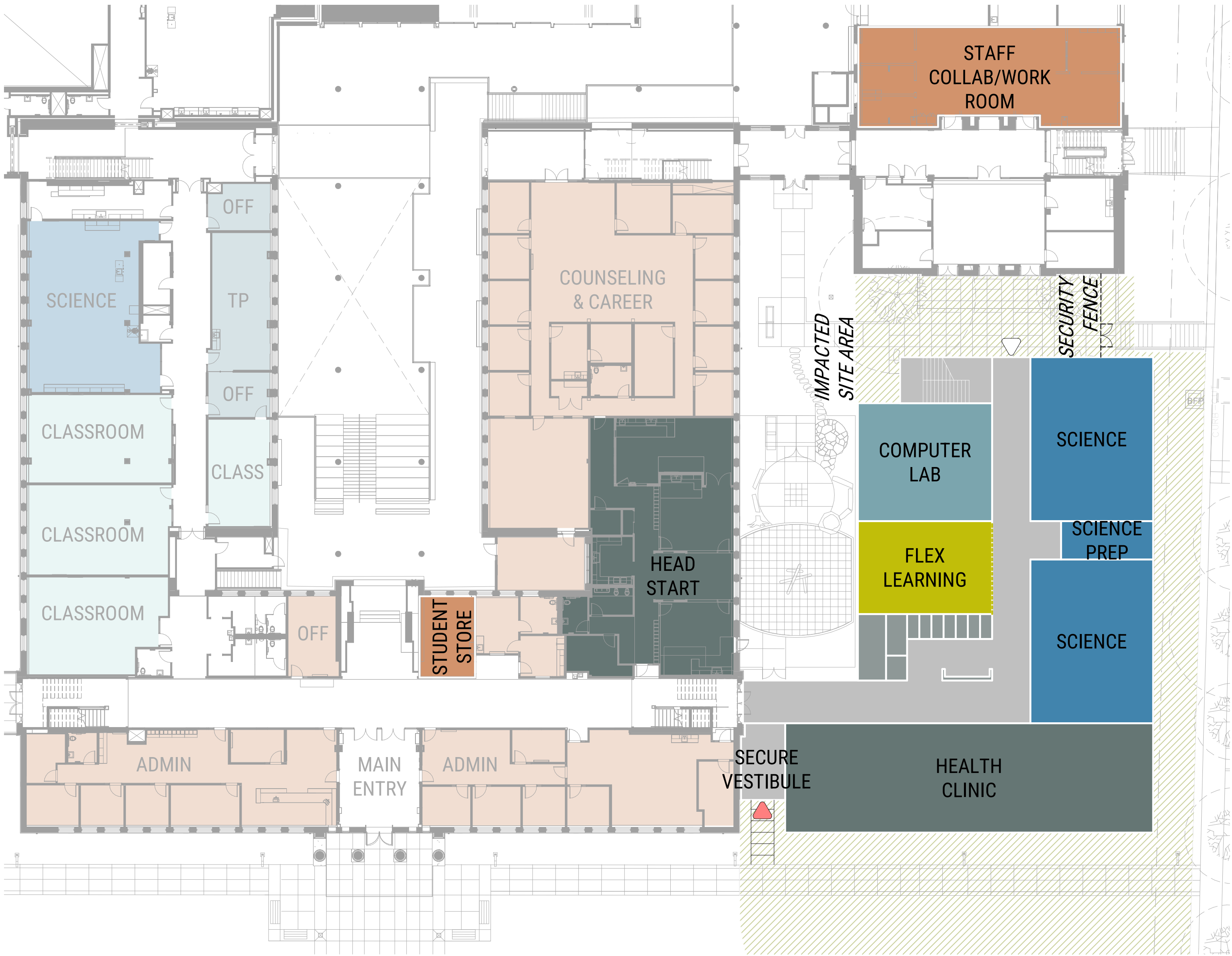
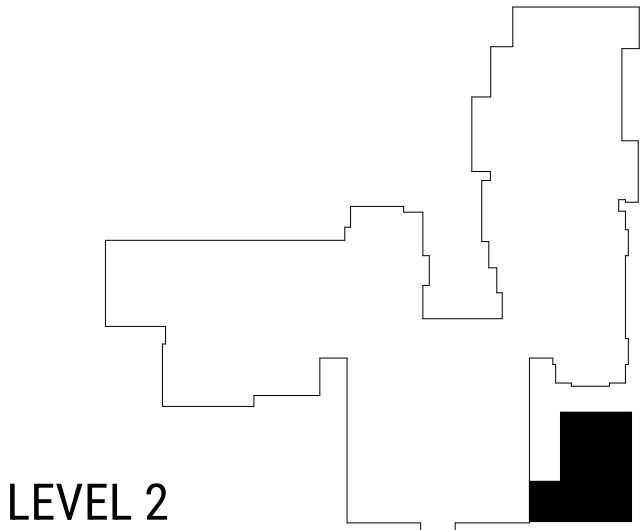
PROGRAM AREA			
SPACE	COUNT	AVG AREA	TOTAL AREA
CLASSROOM	3	912 SF	2,736 SF
SCIENCE	4	1,376 SF	5,504 SF
SCIENCE PREP	2	240 SF	480 SF
FLEX LEARNING	2	768 SF	1,536 SF
COMPUTER LAB	1	693 SF	693 SF
TEACHER PLANNING	1	528 SF	528 SF
STAFF COLLAB/WORK ROOM	1	1,056 SF	1,056 SF
STUDENT STORE	1	307 SF	307 SF
CHOIR	1	1,575 SF	1,575 SF
ROBE STORAGE	1	320 SF	320 SF
TOTAL PROGRAM AREA:			14,735 SF
RENOVATED AREA:			300 SF
NEW CONSTRUCTION AREA:			20,800 SF
TOTAL BUILDING AREA:			21,100 SF

\$\$\$

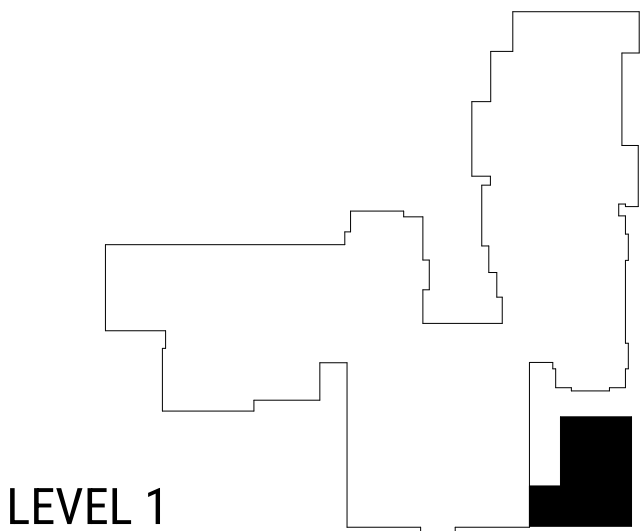
OPTION 2 - SINGLE ADDITION / HEALTH CLINIC RELOCATED



SECOND FLOOR



FIRST FLOOR

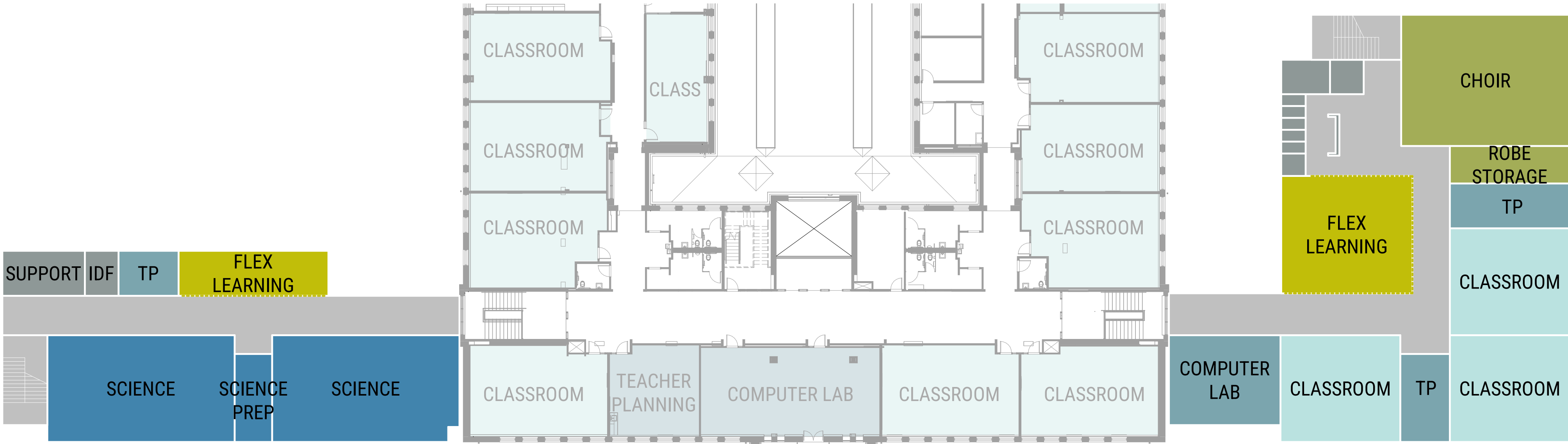


PROGRAM AREA			
SPACE	COUNT	AVG AREA	TOTAL AREA
CLASSROOM	3	912 SF	2,736 SF
SCIENCE	4	1,368 SF	5,472 SF
SCIENCE PREP	2	240 SF	480 SF
FLEX LEARNING	1	849 SF	849 SF
COMPUTER LAB	1	1,076 SF	1,076 SF
TEACHER PLANNING	1	227 SF	227 SF
STAFF COLLAB/WORK ROOM	1	1,707 SF	1,707 SF
STUDENT STORE	1	307 SF	307 SF
CHOIR	1	1,575 SF	1,575 SF
ROBE STORAGE	1	320 SF	320 SF
HEALTH CLINIC	1	2,736 SF	2,736 SF
TOTAL PROGRAM AREA:			17,484 SF
RENOVATED AREA:			2,000 SF
NEW CONSTRUCTION AREA:			20,800 SF
TOTAL BUILDING AREA:			22,800 SF

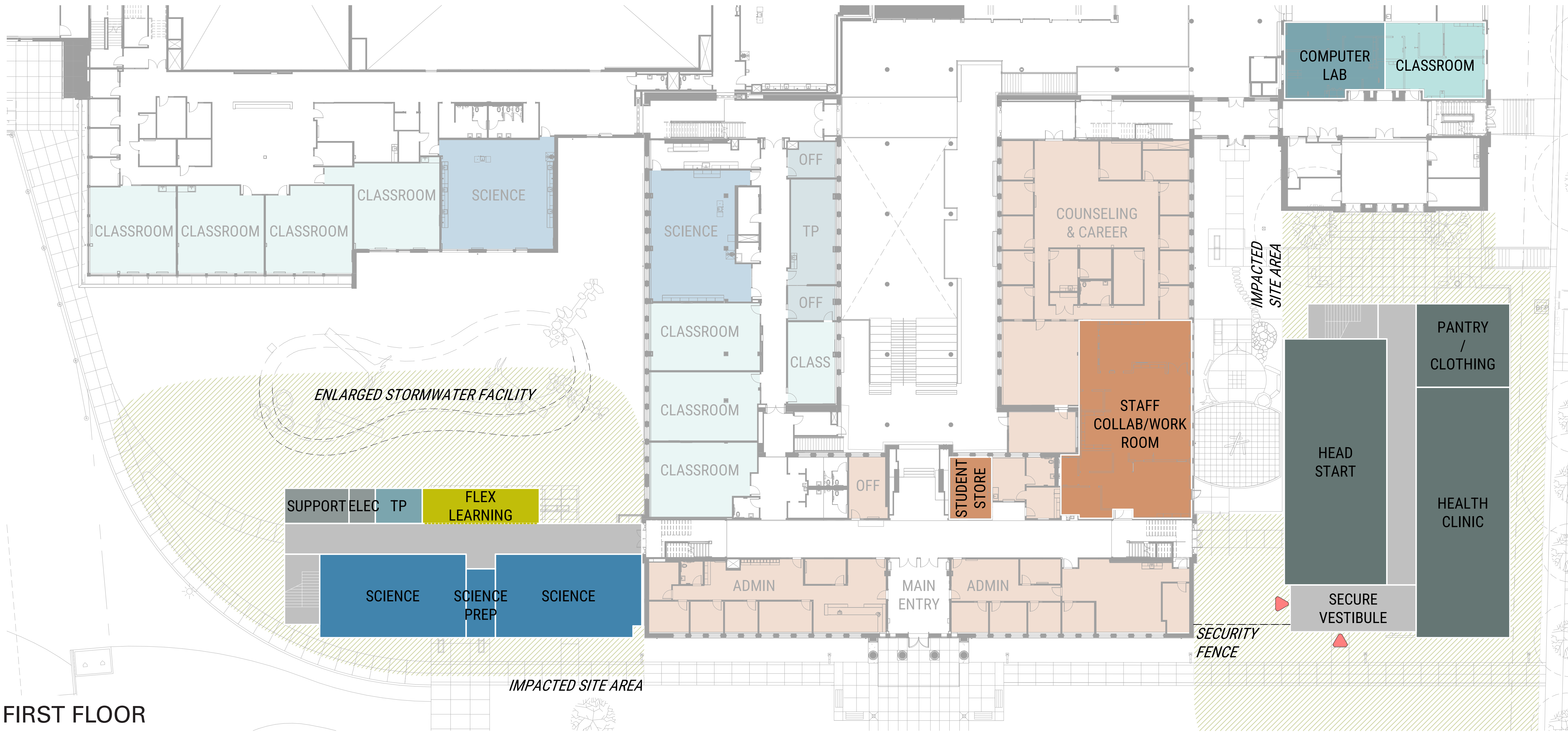
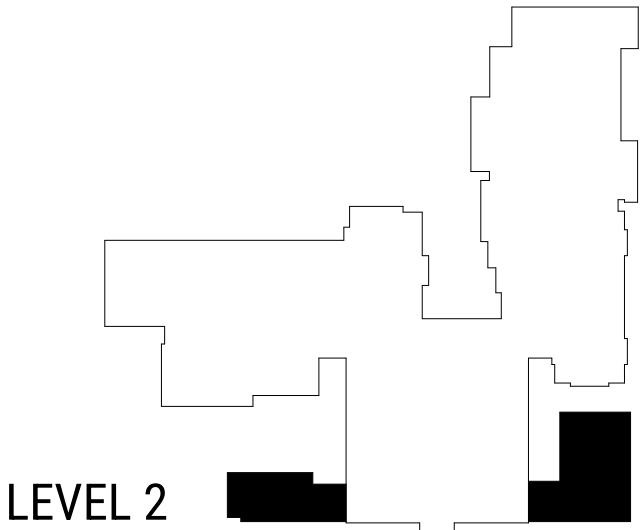
\$\$\$



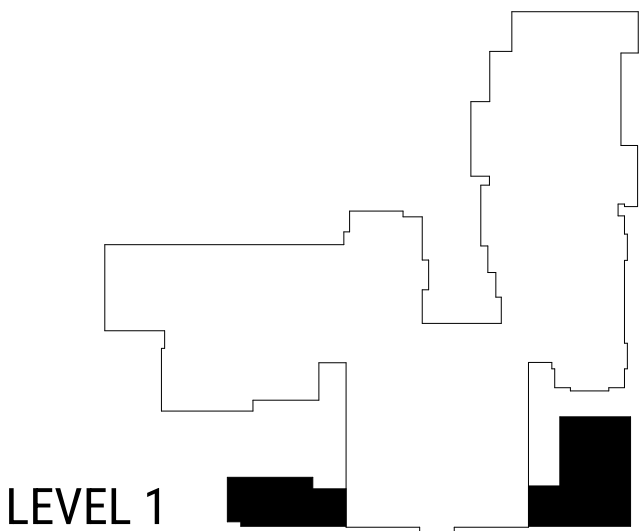
OPTION 3 - TWO ADDITIONS / WRAP-AROUND SERVICES RELOCATED



SECOND FLOOR



FIRST FLOOR



PROGRAM AREA			
SPACE	COUNT	AVG AREA	TOTAL AREA
CLASSROOM	4	897 SF	3,590 SF
SCIENCE	4	1,419 SF	5,676 SF
SCIENCE PREP	2	235 SF	470 SF
FLEX LEARNING	3	686 SF	2,057 SF
COMPUTER LAB	2	784 SF	1,568 SF
TEACHER PLANNING	4	270 SF	1,078 SF
STAFF COLLAB/WORK ROOM	1	2,701 SF	2,701 SF
STUDENT STORE	1	307 SF	307 SF
CHOIR	1	1,575 SF	1,575 SF
ROBE STORAGE	1	320 SF	320 SF
HEAD START	1	2,940 SF	2,940 SF
HEALTH CLINIC	1	2,736 SF	2,736 SF
PANTRY / CLOTHING	1	912 SF	912 SF
TOTAL PROGRAM AREA:			25,930 SF
RENOVATED AREA:			4,700 SF
NEW CONSTRUCTION AREA:			29,200 SF
TOTAL BUILDING AREA:			33,900 SF

\$\$\$

## REQUESTS WE'VE HEARD:

- + More storage needed throughout school
- + Centrally located student store
- + Better visibility from admin office to entry
- + More display cases throughout campus
- + More lockers for students
- + Sinks added to more art classrooms
- + Space for Choir and/or Dance
- + Ability to secure/close-off main gym from Aux gym and other parts of the school
- + Bleachers in gym updated for easier deployment at full capacity
- + Direct access to College Career Center
- + Direct access to Head Start from exterior
- + Direct access to Health Center from exterior
- + Direct access to Food/Clothes closet from exterior
- + Better exhaust/ventilation in kiln room
- + Dedicated exhaust of laser cutters in Engineering
- + Add cord reels in Engineering classroom
- + Evaluate ventilation in Uniform Storage 173A

## WHAT ELSE?



PRECEDENT IMAGES / COMMON AREAS





PRECEDENT IMAGES / LEARNING SPACES

